

## **ASUS ROUTER WALL CEILING MOUNT INSTRUCTION:**

This Mount will fit for this ASUS Router:

- ASUS Rog Rapture GT-BE98 (BE25000)
- ASUS Rog Rapture GT-BE98 PRO (BE30000)
- ASUS RT-BE96U (BE19000)

The shipping package include:

- 1x ASUS Router Bracket
- 1x ASUS Router Bracket Template
- 2x Screw 4x40mm
- 8x Screw 3x20mm

You need:

- Screwdriver T10 and T20 (Torx)
- Water level
- Pencil
- (Optional: 2x plasterboard anchors or dowels)

### **How to mount: (READ CAREFULLY)**

**I am not responsible for any damage caused by improper use. You do it on your own risk!**

1. Place the template on the back of your ASUS router as seen on the picture *Figure 1*. There must be 4 grooves free at the top. The template must be pressed all the way to the right against the bevel. The guide on the template allows to be aligned easily and safely.
2. Now place the bracket against the template so that the two notches meet. Take a look on *Figure 2*. The arrows on the bracket should normally point in the direction of the nameplate upwards, unless you want to mount the router in an unusual position, then the arrows can point in the opposite direction. This makes it possible to attach the router in 45-degree steps. Therefore, you can adapt it to your individual personal use. Just consider in which position the router should be mounted.
3. Pay attention to the exact orientation of the plate. Otherwise, the screws will not fit into the grid lines on the router.
4. The screws should not be tightened yet. So only screw them in halfway. Check on the underside whether the bracket is parallel to the grid (*See Figure 3*). Now you can carefully screw in the 8 screws one after the other. It is important that you do this at a slight angle as shown in *Figure 4*. The holes in the bracket already specify the angle.  
**Caution: If you overtighten the screws, you may damage your router. Therefore, screw with a lot of feeling! It's only a plastic grid ;)**

Now you can prepare the mount or ceiling:

5. Place the template on the wall or ceiling. For wall mounting, the two holes in the template must be horizontal to each other. Use a water level as shown in *Figure 6*.
6. Now mark the points through the holes in the template on the wall or ceiling with a pencil. At these points the 4x40mm screws come into the wall. **Work with precision.**

7. OPTIONAL: If you have a drywall, you should use plasterboard anchors and if you have a concrete wall, you need a drill and dowels.
8. Do not screw the screws all the way into the wall or ceiling. Allow both screws to protrude about 9mm from the wall or ceiling. See *Figure 6*.
9. Now attach the router carefully. If the screw heads do not fit properly into the flange of the router mount plate, the tighten the 4x40mm screws more or less.
10. That's it. Enjoy!

**IF YOU NEED HELP, FEEL FREE TO CONTACT ME:**

**shop@investegate.de**

**I would be very happy to receive a picture of the successful installation!**

**Please leave a good feedback. THANK YOU!!!**

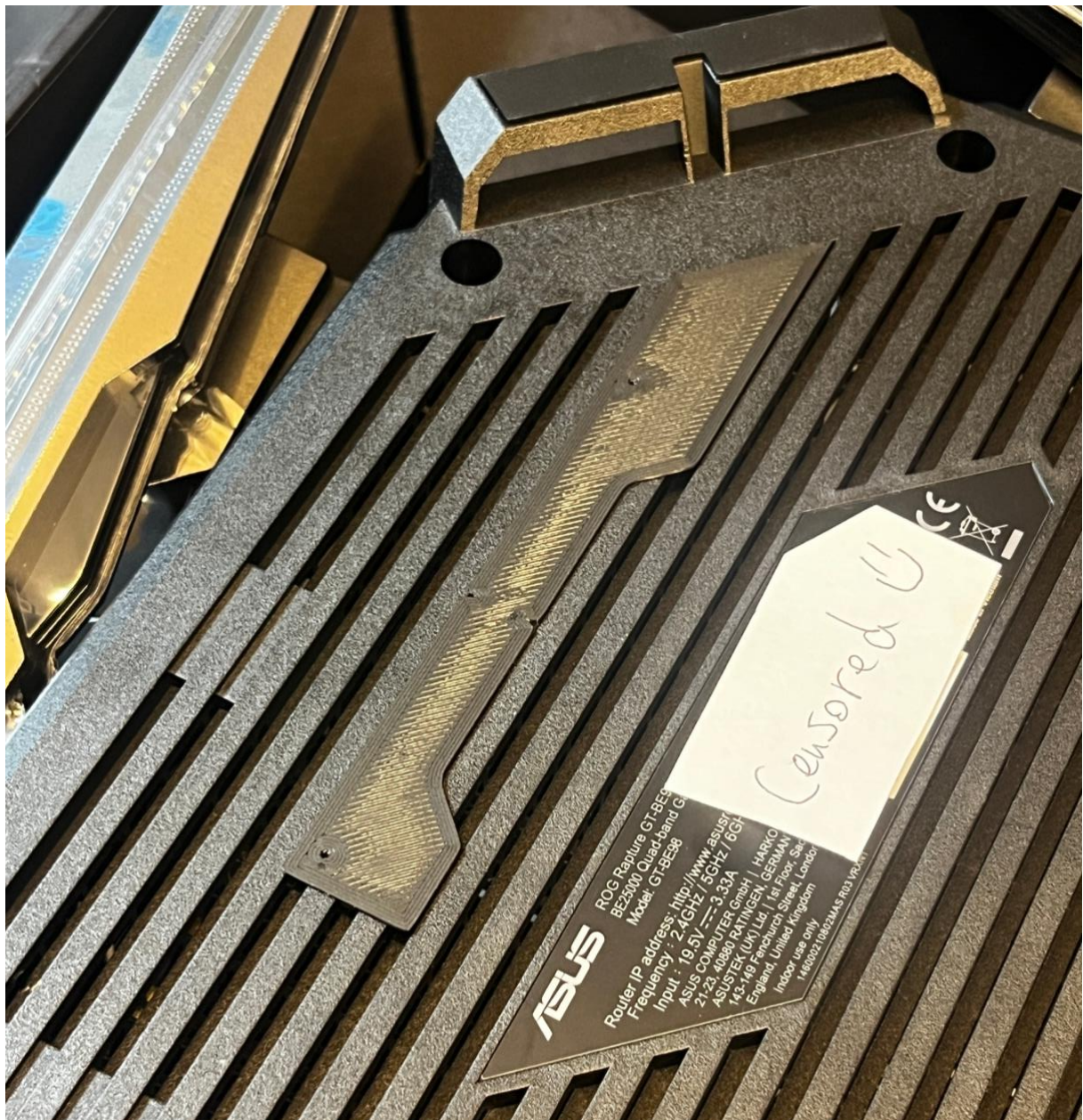




Figure 1.

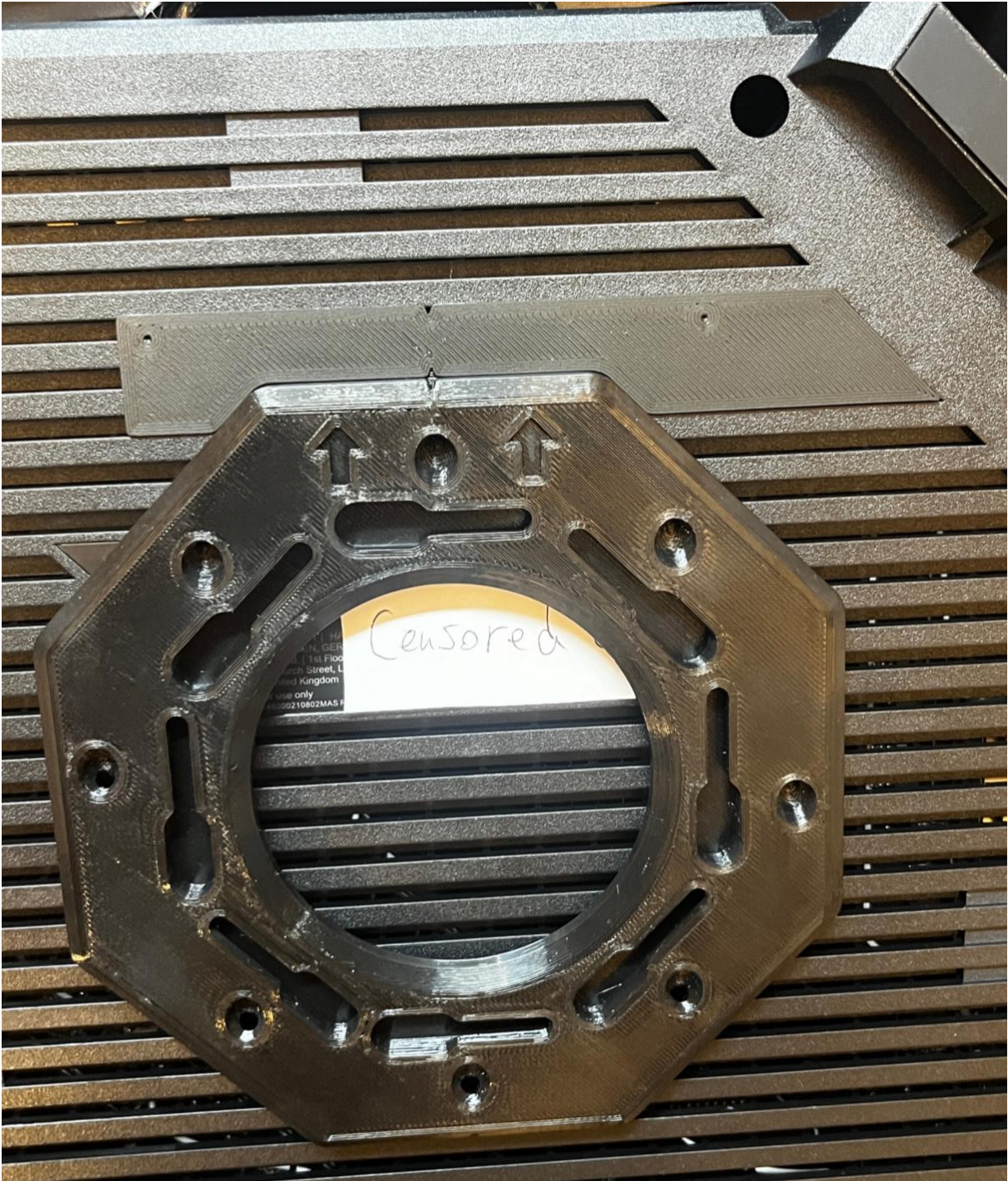


Figure 2.



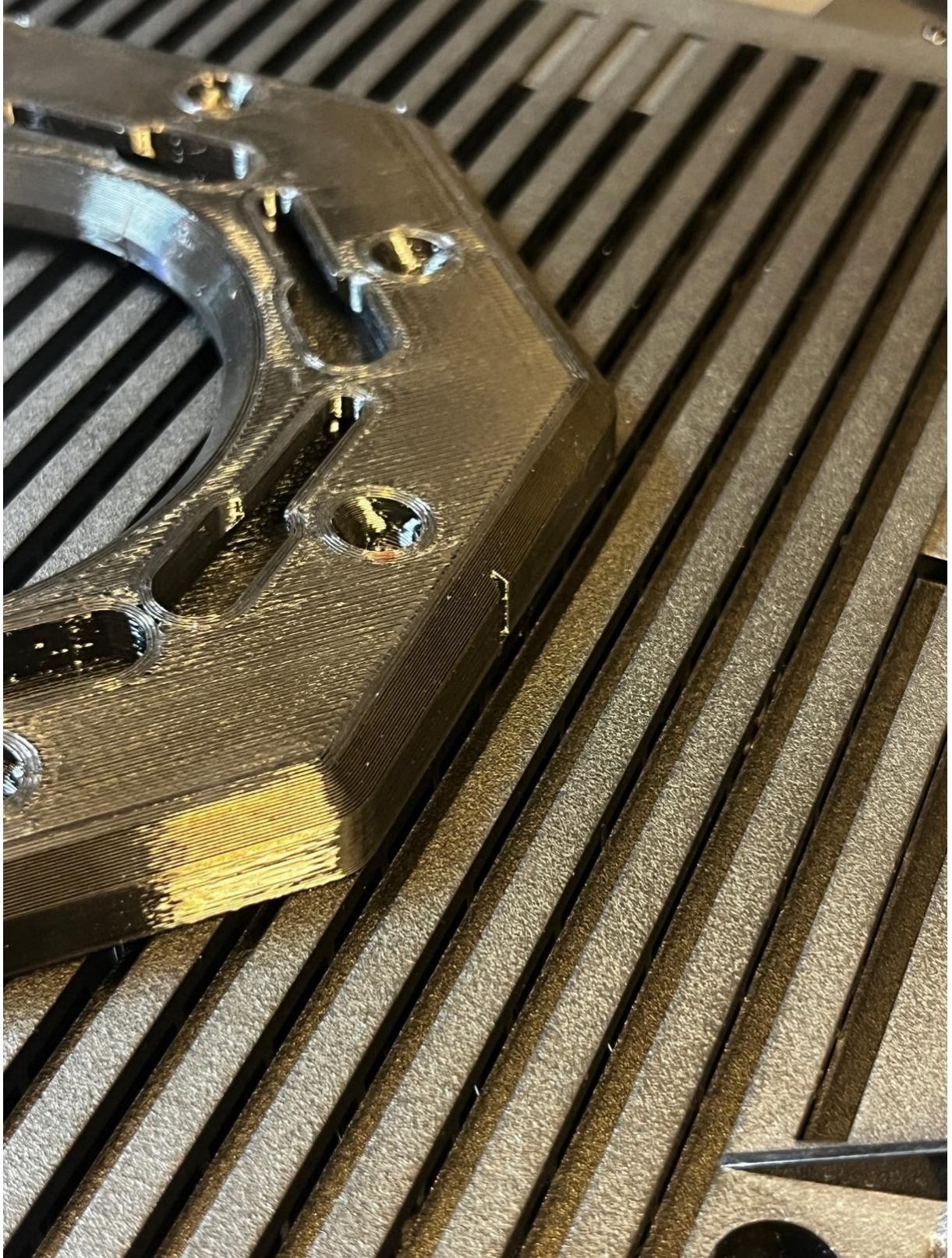


Figure 3.



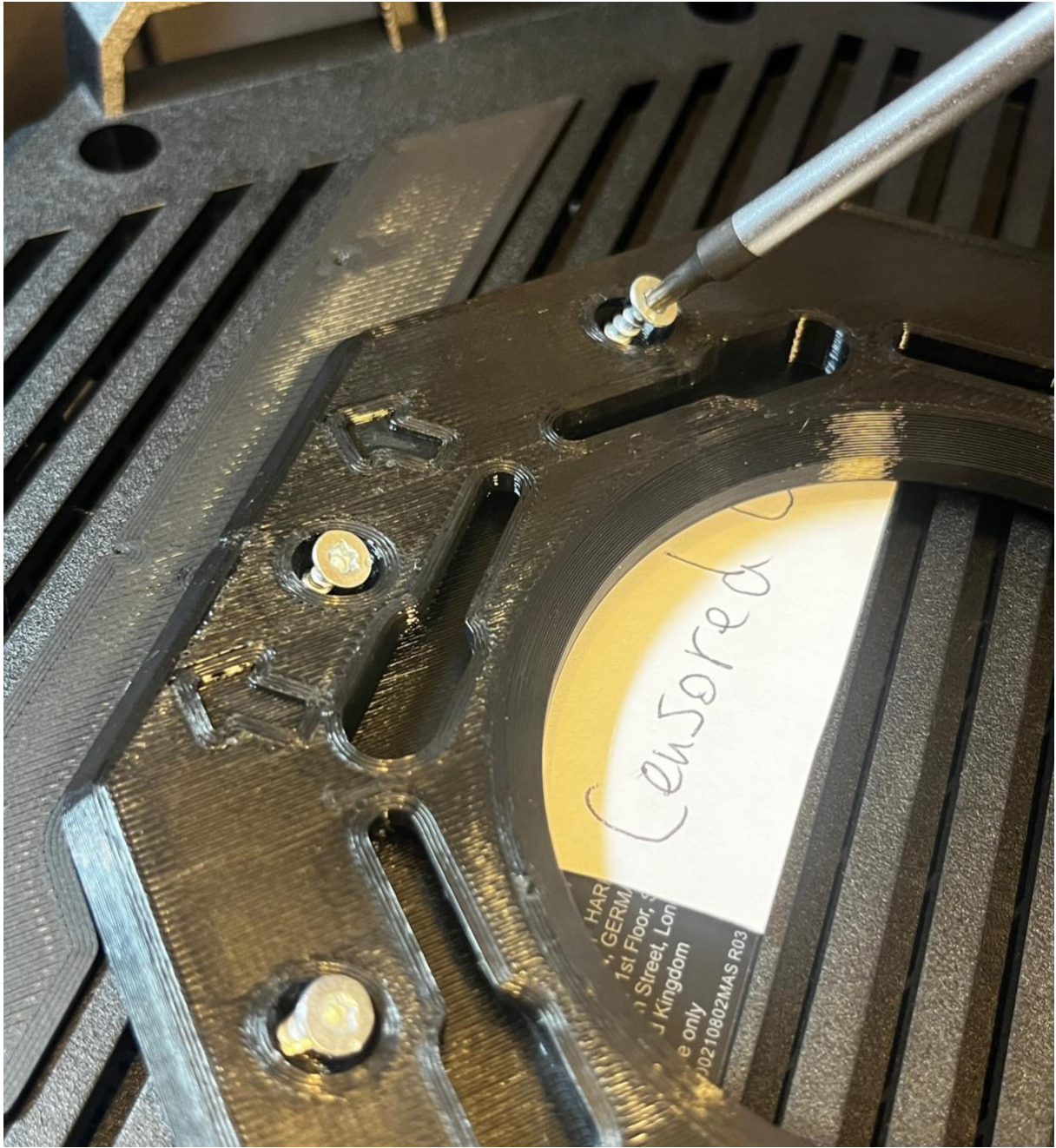


Figure 4.



Figure 5.



Figure 6.



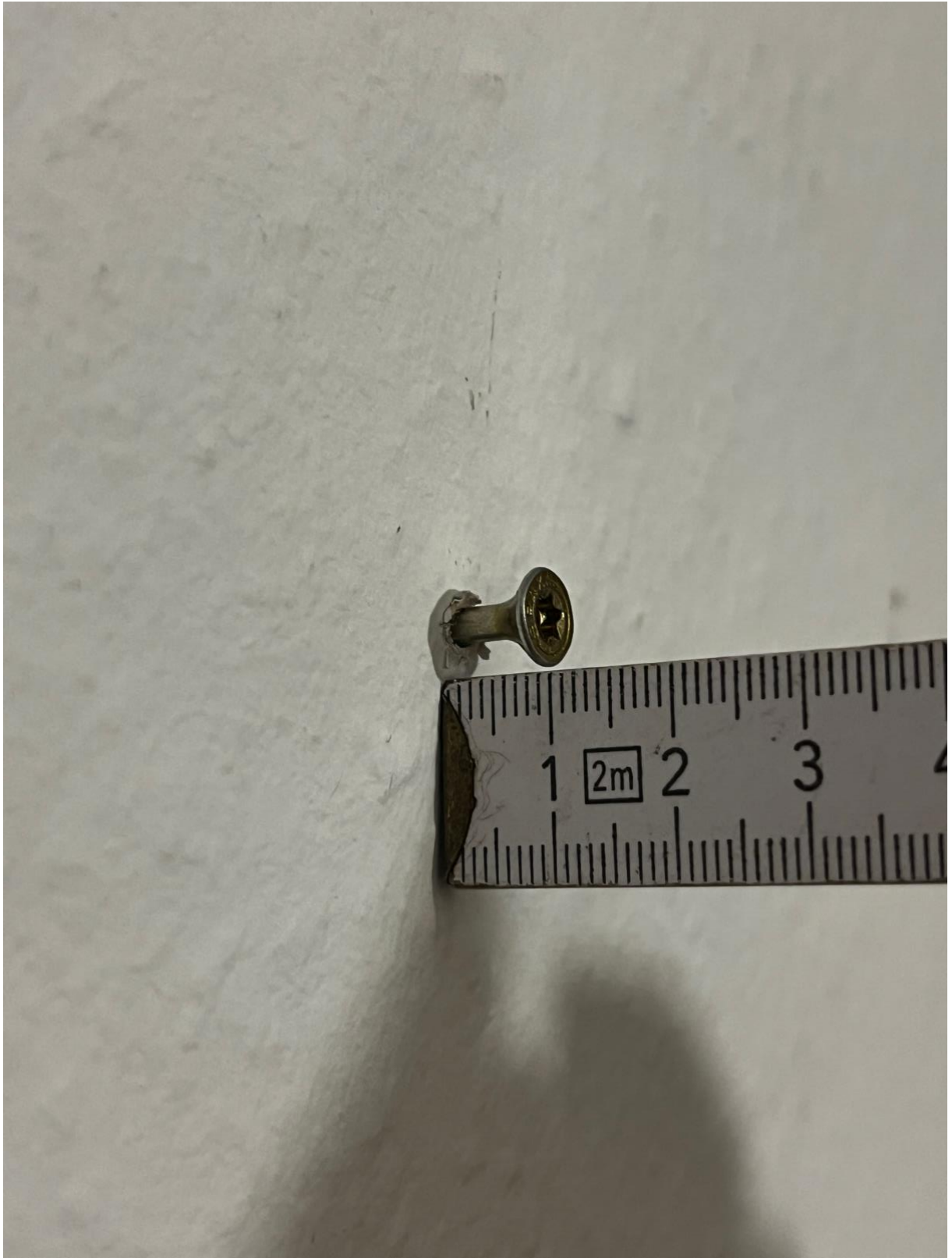


Figure 7.